

**THE
OFFICIAL
SHOW
GUIDE OF**

2023 AGRO EXPO

connect. discover. innovate.



A SPECIAL SUPPLEMENT TO

Michigan
Farm News



August 15 & 16, 2023

5605 Findlay Rd. | St. Johns, MI 48879

WWW.THEAGROEXPO.COM



STOP ON RED AT AGRO EXPO!

Why do we build sprayers that put every drop of product exactly where you want it? Because of the all -nighters you pull. That extra data you waded through. The few more bushels you add every year. Because you sweat the details. So we do the same. Enhanced LED lights for wider visibility. Ergonomic cab design for all-day comfort. And even more precise spraying technology. Because just like you, we know every drop counts.

Explore every detail with us during our demonstrations 11AM and 2PM both days!

August 15 & 16, 2023 - St. Johns MI

Janson
EQUIPMENT COMPANY

AGRO
EXPO
connect. discover. innovate.

BRECKENRIDGE

7581 E Monroe Rd
Breckenridge, MI 48615
(989) 842 3141

CHARLOTTE

799 Island Hwy
Charlotte, MI 48813
(517) 543-0070

REESE

9676 Saginaw St
Reese, MI 48757
(989) 868-4118

   
caseih.com

www.jansonequipment.com

CASE IH

All rights reserved. Case IH is a trademark registered in the United States and many other countries, owned by or licensed to CNH Industrial N.V., its subsidiaries or affiliates. www.caseih.com

Table of Contents

Welcome Letter	4
Advisory Committee	5
40 Years of Better Crop Nutrition	6
See OXBO's 7650 High Clearance Front Boom Sprayer Demo	9
HJV to Demonstrate Apache's AS1050 – 'The Ideal Fit' for your Operation	10
Dealer Partner vs. Dealership	12
Hutson Inc. to Showcase John Deere's Hagie STS12 Self-Propelled Sprayers	14
Janson Equipment Brings the Case IH Patriot 4350 to AgroExpo	17
Hutson Inc. to Showcase John Deere's 'See & Spray Ultimate'	19
Schedule – Tuesday, August 15	20
Schedule – Wednesday, August 16	21
Speakers	22
Show Map	25
Exhibitors List	26
FFA Crop Management Challenge Sponsors	29
Ellens Equipment to Profile New Holland's Guardian SP Series Sprayers at AgroExpo Field Demo	32
See the Fendt Rogator 900 Series in Action	34
Ag Pro Farm Service to Showcase the Latest in Drone-Spraying Technology	37
See Precision Planting's Sprayer Technology Retrofit Product Line	38
AgroExpo Sponsors	40
Food Vendors	45

STREAMING
EDUCATION AND ENTERTAINMENT *On Demand*

AgPhD
WITH BRIAN G. DAGGHER, NHTV

WAG
WAG (WAG) (WAG)

ADS
ADS (ADS) (ADS)

Successful Farming

CHECK IT OUT

AcresTV

WATCHACRESTV.COM
SIGN UP NOW! IT'S FREE

android androidtv iPad iPhone apple tv

2023 AGRO EXPO



GETTING TO AGROEXPO

SCAN QR CODE

Use your cell phone camera
to scan the code for
directions to AgroExpo!

EVENT ADDRESS

5605 Findlay Rd.
St. Johns, MI 48879

Welcome to the 2023 AgroExpo!

I am very excited to bring you the 2023 AgroExpo! With more than 145 exhibitors, multiple sprayer demonstrations and great speakers in our lineup, you're sure to take away valuable and useful information for your operational success.

I encourage you to use the show guide to make the most of your visit. Review the exhibitor list and plan your day. Be sure to network with fellow growers, walk the aisles and meet with industry professionals who can provide solutions to your current operational needs.

Sprayer demonstrations are featured at this year's AgroExpo. I want to thank all demonstration participants for sharing their knowledge and answering questions about applications for your farm.

With more than 100 varieties of soybeans and 100 different corn hybrids on display, there is something for everyone to discover. Visit your seed professional's booth and review the various benefits of their corn and soybean seed selections.

Equipment, as always, is very popular. You'll find many opportunities to connect with industry leaders representing top brands and showcasing the latest in innovation and technology.

During your visit, make time to join us in the speaker tent and gain insight into problems and solutions facing agriculture. Presenters from a variety of industries will cover topics that include – *Disappearing Insects: The consequences of global insect decline*; *One Farmer's Trash is Another Farmer's Profitability*; *Managing corn residue for your bottom line*; and *The Other Half of Soil Health*.

The show continues to grow and, with your involvement, has become one of the largest agricultural trade shows in the region. We are proud to be a part of that. Our mission to **Connect, Discover** and **Innovate** is at the forefront of our planning and steering committee.

I personally want to thank all of you for your loyal participation, and to our team of industry professionals and volunteers who will once again make this AgroExpo a success.

Enjoy the show!

Marnie Swartzendruber

MARNIE SWARTZENDRUBER

AgroExpo Show Coordinator

THE AGROEXPO ADVISORY COMMITTEE

Marnie Swartzendruber

AgroExpo

Jay Eccleton

AgroLiquid

Brad Cesal

Bush Hog

Carla & Kris Wardin

Evergreen Farms

Pat Feldpausch

**Feldpausch Precision
Services**

Amber Echlin

**GreenStone Farm
Credit Services**

Dan Putnam

H&S Manufacturing

Kevin Shelle

Hutson Inc.

Adam Janson

Janson Equipment

Jim Zook & Kristin Poley

Michigan Corn Growers

Tim Rogers

Michigan Farm Bureau

Mark Seamon

Michigan Soybean Promotion

Monica Jean

MSU Extension

Tim Duckert & Jacob Schmitt

North Central Research Station

Becky McNitt

The Nature Conservancy

Dann Bolinger

Pioneer

SELL YOUR REAL ESTATE OR EQUIPMENT AT AUCTION!



AWARD WINNING AUCTIONEERS SINCE 1984



CALL/TEXT TODAY FOR A FREE CONSULTATION

SID MIEDEMA: 616-560-2709

CHUCK RANNEY: 616-560-0839

JEREMY MIEDEMA: 616-460-7619

LIVE & ONLINE AUCTIONS
#AUCTIONSWORK

601 GORDON INDUSTRIAL CT., BYRON CENTER, MI | WWW.MIEDEMAAUCTIONEERING.COM



**Achieve the 3 Principles
of Precision Strip-Tillage
in One Trip**

- 1) Ideal Seedbed Prep
- 2) Precision Nutrient Placement
- 3) Optimal Root-Zone Conditioning



**Ellens
Equipment**

McBain - Ithaca - Beal City

Visit us at Booths E912, E913 & E1013



We look forward to seeing you at the Agro Expo!
Come check out New Holland's Precision Farming
Guidance Solutions as well as New Holland's
equipment lineup from compact to high
horsepower tractors, sprayers, choppers,
combines and more!



40 Years of Better Crop Nutrition

AGROLIQUID

There are a lot of choices out there when it comes to selecting products for your crop nutrition. When you combine the right nutrients at the right time you are going to use less fertilizer and get better results. That's where AgroLiquid comes in.

What makes AgroLiquid stand apart from the crowd?

It comes down to what we've been doing for 40 years: providing a complete line of effective crop nutrients backed by highly trained staff and retail partners to provide comprehensive recommendations based on your unique soil and crop goals. AgroLiquid has been on a mission to engineer the best plant nutrition products while defending your crops, the soil, and the environment. This has required a relentless passion for research and innovation.

THE IMPORTANCE OF RESEARCH

AgroLiquid removes the guesswork inherently involved in producing a crop by investing in research. AgroLiquid continuously tests our products against other liquid and dry fertilizer products, enabling us to produce more yield with less applied fertilizer. This is done at the North Central Research Station (NCRS), home to the AgroExpo, a private research facility of more than 1,400 acres. The NCRS also contracts and facilitates research across the country in soils and crops not native to our region. Armed with the knowledge and confidence achieved through this extensive research, our agronomists make scientifically based recommendations to economically optimize yield potential.

Part of what makes AgroLiquid products safe, efficient, and effective is our proprietary technology. Our technology has been developed specifically to protect crop nutrients from tie-up in the soil while allowing better plant utilization. This technology allows us to chelate/encapsulate nutrients within the sweet spot – not too loose but not too tight. This helps to ensure a slow and direct release so that nutrients are available when and where plants need them throughout the growing season.

This technology is what also makes AgroLiquid products effective foliar — efficiency in its penetration of the leaf cuticle. Since our chelation is derived from plant sources, it can one, be broken down over time by soil biology without the worry of adverse effects in soil applications, and two, be quickly broken down by the plant and used in foliar applications.

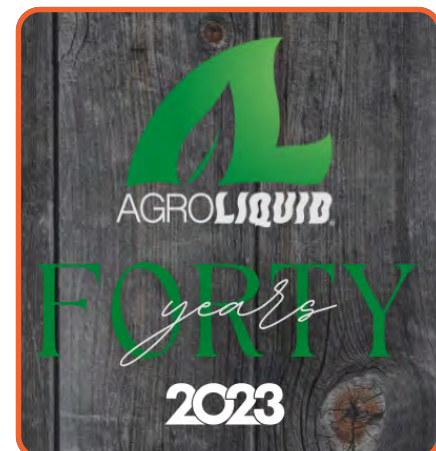


KEEP GETTING BETTER

We believe in continuous improvement. Not only are we constantly working on researching and developing, but we also work toward improving our quality, our accountability, our knowledge, our understanding, and our commitment to providing our customers with the best there is to offer in both products and services.

AGRONOMIC EXPERTISE

AgroLiquid's sales, agronomy, and research teams are eager to help. Our business does not exist without financially healthy growers. We want you to succeed. And we want the opportunity to help overcome the challenges you face. The question is not if AgroLiquid products have a place in your operation – it's where. Primary nutrients, secondaries, and micros – we have all the crop nutrients you'll need. From seed-safe, in-furrow options to tissue-safe foliar or soil



applications, our application flexibility is unrivaled. Compatibility makes applying balanced nutrition easy, laying the foundation for superior crop performance. Expect more from your fertilizer.

Find out more at [AgroLiquid.com](https://www.agroliquid.com).

harvest solar

Take
ADVANTAGE
of solar energy in
AGRICULTURE

Visit us at
AGRO EXPO
August 15th & 16th
Booth
#E811

Well known throughout the Midwest with a reputation for quality, Harvest Solar has provided more than 1,000 on-site renewable energy projects for farms and businesses over the last 15 years. Quality and experience you can trust.

FREE SITE ASSESSMENT

HARVESTSOLAR.COM | 888-90-SOLAR | 2218 EAST HIGH STREET | JACKSON, MI

Peters Brothers Farm Supply LLC

2807 Stapleton Rd., Memphis, MI 48041

Jon Peters 810-841-5403 • Terry Peters 810-841-5405



2021 Horsch RX-30,
manual depth control, optiroll rubber roller, like new,
\$135,000



New 2023 Horsch RX-35
manual depth control, ringflex finisher.
\$165,300

*Our High Speed Compact Disks Replace all other Forms of Spring Tillage,
Creating the BEST Seedbed you have ever Planted in!*

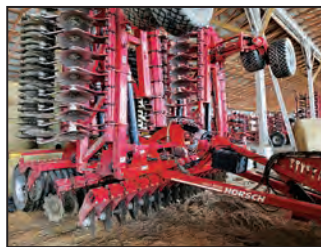
HORSCH
Farming with passion

AN EXCELLENT YIELD
STARTS WITH AN EXCELLENT
SEEDBED \$\$\$\$!

Elmer's
MANUFACTURING



New Horsch RX-20, manual depth
control, ringflex finisher. **\$109,000**



2022 Horsch RX-40, manual
electronic depth control, optiroll rubber
roller, like new, used on our farm,
2,000 acres. **\$179,000**



Horsch RT-330, manual depth control,
new blades, field ready, no seeder.
\$60,000



New Horsch RX-25, manual depth
control, ringflex finisher. **\$129,000**



2022 John Deere 9R 640, 525 hours,
5 remotes, pto, signature cab, Goodyear
LSW 800 tires, tires, used on high-speed
disk and graincart, like new. **\$615,000**



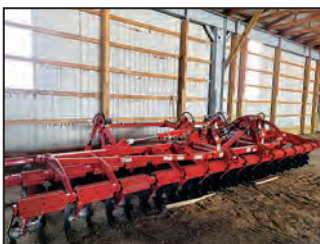
John Deere 9360R, 2,300 hours, 5
remotes, pto, Michelin 520R85x46
tires, used mostly on graincart and
planter. **\$230,000**



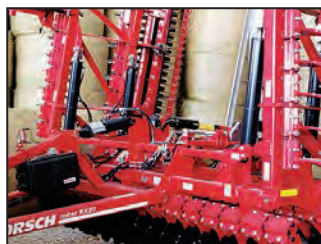
John Deere 9570RT, 3,400 hours,
6 remotes, leather interior, highflow
hydraulics, PTO, 36 inch tracks,
excellent condition. **\$345,000**



2023 Horsch RX-40, manual depth
control, ringflex roller. **\$195,000**



Horsch MT-22, new. **\$65,000**



2023 RX-30, manual depth control,
ringflex roller. **\$155,000**



2022 Horsch RX-20, Manual depth
control, ringflex roller, like new
condition, NAP. **\$100,000**



2021 Elmer's 2000 bu., Tracks,
Righthand auger unload, scales, joy
stick controls, auto-unload, used on
our farm, like new. **\$167,000**



See OXBO's 7650 High Clearance Front Boom Sprayer Demo

FARM NEWS MEDIA

If you're in the market for high-clearance sprayer options, you will want to watch for OXBO's 7650 sprayer during the AgroExpo field demonstrations.

OXBO Salesman Andrew Ennis says the company will be bringing the latest model to the event, equipped with a 1,600-gallon stainless steel tank, 120' Millennium aluminum boom and the optional 4-wheel steering system designed to minimize crop damage on headland turns.

"OXBO sprayers were designed with our customers in mind," Ennis said, adding Oxbo's "direct to the customer" approach is unique to the industry. "Our ability to manufacture, directly sell, support and service our products are important to our customer base."

According to Ennis, the big capacity of

the OXBO 7650 is matched with a standard 77" of crop clearance for late-season application versatility in seed corn production as well as fungicide application for tar-spot control.

An impressive 350 horsepower Scania engine provides an abundance of power to the ground drive system, and is matched up with traction control, giving confidence to get through tough conditions.

A spacious CLAAS Vista Cab with Category 4 Air Filtration System is a standard feature on all OXBO sprayers and come equipped with a Raven Viper 4+ Controller, camera assist autosteer and Hawkeye Boom Control.

Precision options from Ag Leader, Raven Industries and a John Deere "Ready" option are also available as well as optional Raven Hawkeye or Hawkeye HD Individual Nozzle Control.

OXBO's 7650 comes standard with a Hydro 9307-C wet seal product solution pump providing consistent powerful pressure system flow at up to 370 gallons per minute. The wet-seal design also protects seal for longer pump life and reduced downtime.

A factory-installed direct injection tank system is available with up to four tanks where direct nutrient injection is preferred, allowing for the product to be mixed directly into the flow, rather than the entire system.

Full-time, four-wheel drive is standard on the OXBO 7650, and features a walking beam suspension that allows for 22" of travel, keeping the chassis & the boom level across any field conditions.

Additional features include:

- **Crop guides** — Design gently diverts crops to avoid damage.
- **Narrower fenders** — Upgraded design allows you to move in and out of rows without disturbing crop.
- **Center-folding, poly belly pan panels** — New design is lighter weight and provides easier access to important areas for serviceability and troubleshooting.
- **Rear boom option** — Features 12 nozzle, rear dispensing boom.
- **Detasseler prep package** — New kit makes it easy to connect to TS4 toolbar for detasseling.
- **Boom options** — The Millennium Boom is available in 90', 100' and 120' options.
- **Flotation tire option** — LSW 650/60 R42 to keep you going in muddy conditions.



We provide residential, commercial, industrial electrical services and UL listed panel construction.

(989) 288-0607

116 N. Oak St., Durand MI 48429
E-mail: info@cec-electric.com

HJV to Demonstrate Apache's AS1050

'THE IDEAL FIT' FOR YOUR OPERATION



FARM NEWS MEDIA

Visitors to AgroExpo will see the latest in sprayer technology offered by Apache Sprayers. Sold and serviced in Michigan through Chesaning-based HJV Equipment, the Apache AS1050 will be operating during the AgroExpo field demonstrations, Aug. 15 and 16.

Equipped with a 1,000-gallon tank, HJV Sales Specialist Steve Browning, calls the Apache AS1050 an ideal fit for almost any operation, noting it's large enough for higher rate application yet still lightweight and maneuverable with great visibility.

"HJV Equipment in Michigan is excited to introduce the Apache AS1050 sprayer," Browning said. "This lightweight and efficient sprayer features a powerful 225HP Cummins engine and a ZF six-speed power-shift transmission."

According to Browning, the ZF six-speed power-shift transmission includes a lock-up torque converter, multiplying engine torque two-fold, putting the 225 HP to good use as efficiently and effectively as possible.

With operator comfort a high priority, the AS1050 comes standard with unique fluid-elastic active "Hydrocone" cab isolators, improving the ride by as much as 50% by better absorbing shock and displacement of the chassis.

A variable displacement load-sense

piston pump provides the right amount of hydraulic flow at all speeds while reducing steering effort by as much as 20% for effortless steering ease at headlands, hills, and tight corners.

AS1050 boom options include a steel 90', 60/90' or 100', or aluminum options of 100', 120', and a 132' — and can be equipped with Apache's optional boom recirculation system, helping to prime the boom before spraying, ensuring a precise and uniform spray pattern, according to Browning.

"The optional boom circulation reduces and/or eliminates product settling in boom pipes, enables accessible and complete cleanout of the booms, detects spray mode versus recirculation mode automatically, and works with different precision options such as individual nozzle control or section control with built-in low-flow alert," Browning said.

The AS1050, equipped with



Michelin 380/80R38 fronts and Michelin 380/90R46 rear tires, offers customizable specifications including a standard fixed axle width of 120" and 42" of crop clearance with a JCB planetary final drive; or an optional hydraulic adjustable axle width of 120" to 160" — available only with the 50" crop clearance option with 18" drop box all-gear final drives.

Coming in at just 22,200 pounds, the AS1050 provides all the features and benefits of power, efficiency, comfort, and durability — plus all the Precision Ag options you could want without all the extra soil compacting weight, according to Browning.

Apply less, expect more?

PRECISELY.

It's time for a crop nutrition plan that gets more return from every drop. One that starts with a full line of crop nutrients, from nitrogen to molybdenum, features custom formulas that deliver the right nutrients at the right time, and keeps going with robust agronomic knowledge and customer support. AgroLiquid has precisely what it takes to help you succeed like never before.

Find an AgroLiquid dealer near you.

AGROLIQUID.COM

Pro-Germinator®

Sure-K®

Kalibrate®
Precision Potassium



Pro-Germinator®, Sure-K®
and Kalibrate® are registered
trademarks of AgroLiquid.
© 2023 AgroLiquid.
All Rights Reserved.



Dealer Partner vs. Dealership

JANSON EQUIPMENT

"The agricultural industry is changing" is a hot tagline that has been featured in what is now a redundant number of webpages, newspapers, radio ads, tweets, and coffee shops. It is true! There is almost constant innovation making farming more efficient, increasing yield, decreasing costs, and enhancing operator comfort. From the outside looking in, we appear to be far removed from farming/ranching practices of the day's past. Looking deeper, you will find success in the agricultural industry doesn't come from immediate implementation of every hot, new trend, but rather from maintaining multigenerational disciplines and weighing the benefits of advancements against the costs and ability to implement into the operation.

Much like the other subsections of agriculture, the equipment and its capability is advancing. The grower must be more conscious than ever when it comes to their equipment purchasing decisions. The grower has to think not only of the equipment's features and benefits but also the dealer that is providing the equipment to them. Focusing on



pushing trends onto growers for the sake of increasing revenue will result in poor relationships and dissatisfied customers. Dealerships must become Dealer Partners to ensure the highest levels of customer satisfaction and ensure longevity of repeat business.

Janson Equipment prides itself on this differentiation. A one size fits all approach

does not work with the implementation and support of new technologies and new equipment. Janson Equipment takes an individualized approach throughout the selling process to understand the farm, their practices, their disciplines, and their greatest concerns. Through this process Janson Equipment is able to educate our purchasers about their equipment and

Michigan Soybean Committee
is a WIN for Michigan
soybean farmers!



Visit us at Booth P418 to learn more about
what your soybean checkoff is doing for you.

We will be serving up tasty treats fried in
high oleic soybean oil and showcasing
project highlights.



MICHIGAN
SOYBEAN
COMMITTEE

michigansoybean.org

technology options, so they are confident in their final decision. While the decision to purchase comes completely from the grower, the product information, timeliness in response, and implementation/support are the responsibility of a quality dealer partner. This is why Janson Equipment's salesmen are present during delivery to make sure you are getting the most of out your equipment.

Partnership is not earned through one purchase. It is earned from a dealership's commitment to serve your operation continuously through all seasons. This is why Janson Equipment maintains fully trained parts and service staff. Our staff is customer-focused and excited to urgently provide solutions for your issues at hand.

Janson Equipment wants to thank our current customers and future customers for the opportunity to earn their repeat business and for allowing us to be a part of your impressive operations and communities.

If you do not consider yourself a customer of Janson Equipment, please give us an opportunity next time you have any equipment, part, or service need.

Growers interested in finding a dealer partnership with Janson Equipment can reach us via call or text in Reese at (989) 868-4118, Breckenridge at (989) 842-3141, or Charlotte at (517) 543-0070.



Breckenridge, MI store



Reese, MI store

Janson Equipment is proud to be a Platinum Sponsor and Case IH partner for the AgroExpo. It is a great event to show off the great new innovations of our

Case IH products. Please take time to view the new Patriot Sprayer demonstration or stroll through our booths and chat with our reps.



Moving you forward.

For more than a century, we've helped grow agriculture and rural communities. Our lineup of products and services can assist you in reaching your financial goals.

- Agricultural financing
- Country living loans
- Crop and life insurance
- Tax and accounting services

Contact your local branch at 800-444-FARM

Visit our AgroExpo booth #E1007A

 **GreenStone®**
FARM CREDIT SERVICES
www.greenstonefcs.com



GreenStone FCS is an equal opportunity provider and employer.

Hutson Inc. to Showcase John Deere's Hagie STS12 Self-Propelled Sprayers



HUTSON INC.

Curious to see how John Deere has improved on the legendary Hagie line of self-propelled sprayers? Make sure you visit the AgroExpo field demonstrations to see the Hagie STS12 with Exact Apply in action.

Sold and serviced through the Hutson John Deere dealer network of 19 locations throughout Michigan, the "all-new" lineup of Hagie™ Self-Propelled Sprayers, including the STS12, STS16, and STS20, were first introduced in 2022.

According to Hutson's Director of Precision Ag, Kevin Shelle, everything about the sprayer is new, except for the field-proven signature front-spray-boom. He says the combination of Hagie innovation and John Deere precision-ag technology is evident in the Hagie STS Sprayer series.

While STS Sprayers come standard equipped with PowrSpray™ technology that enables fast fills, plus auto prime and onboard mixing, the John Deere ExactApply™ nozzle control technology is available as an option.

"Operators can control droplet size, spray pressure and individual nozzle control on the STS Sprayer," Shelle said. "And pressure recirculation and optional System Air Purge technology can improve job quality and simplify cleanout while reducing product waste."

With higher-cost fertilizers, crop protection products and seed, Shelle says the

ExactApply nozzle control system minimizes the risk of over- or under-applying solution, ensuring the crop is getting exactly the right rate and droplet size across a wider range of speeds.

At the heart of the ExactApply system is a six-nozzle turret with multiple modes of operation to help maintain target application rate and pressure. From the cab, operators can choose:

- **15-Hz pulse-width modulation (PWM)** pulses one solenoid for more consistent pressure and droplet size over a wider range of ground speeds and application rates.
- **30-Hz PWM** pulses both solenoids at 15 Hz for more thorough coverage during high-volume applications, like liquid fertilizer.
- **AutoSelect A/B** mode automatically switches between two nozzles to maintain a constant spray pressure while you are spraying conventionally.
- **Turn compensation** mode decreases the spray rate on the inside of a turn while increasing the rate on the outside, ensuring consistent application across the entire width of the boom.
- **Individual nozzle control** minimizes overlap by controlling spray application at the individual nozzle level, not in typical 8' to 11' boom width sections.

"By maintaining a target rate and

pressure over a wider range of speeds, ExactApply lets you cover up to 20 more acres per hour, based on a 2-mph increase in operating speed, with more consistent spray deposition, saving you input costs and preserving more of your crop's yield potential," Shelle added.

The Hagie STS12 comes standard with a JDLink™ connection, plus an integrated StarFire™ 6000 GPS receiver, Generation 4 CommandCenter™ display and AutoTrac guidance. This integrated technology helps operators reduce overlap and maximize inputs.

"Once activated, JDLink will stream machine and field data to the John Deere Operations Center so owners can easily monitor and track job quality, machine location and machine hours from anywhere," Shelle explained.

Farmers can also setup prescriptions for individual fields within the Operations Center and push the prescriptions to the in-cab Generation 4 display so they or their operators do not have to enter this information into the display.

In addition, the Pro Dispatch™ app can be used to submit application jobs from the cab of the sprayer and to keep accurate records of what work was done in each field.

The Hagie STS12 features a new cab that surrounds operators in all-day comfort while delivering outstanding visibility.



A Category IV filtration system continuously flows filtered air into the cab to help keep the operator's station clean.

While the front boom placement on the STS12 reduces the need for operators to constantly turn and look behind the machine during application, John Deere's AutoTrac™ RowSense™ and AutoTrac Vision help keep the sprayer in the row for precise product placement.

The STS12 also features All-Wheel-Steer technology that keeps the sprayer's

tires in the same set of tracks, reducing the potential for crop damage, even when making 90-degree headland turns.

With up to 76" of underframe clearance, crop disturbance is minimized, and the in-wheel suspension of the sprayer provides operators with a smooth ride.

Equipped with a 1,200-gallon solution tank at the center of the sprayer to balance the weight of the machine, the STS12 can be outfitted with Hagie™ Hybrid Booms in working widths of 90',

100', 120', or 132'. Active Wing Roll™ by Norac® controls boom height when spraying across uneven terrain.

The Hagie STS12 comes standard with a John Deere Powertech™ 9.0 L Engine providing 300 horsepower and is matched up with CommandDrive™ technology to monitor for wheel slip. If one-wheel slips, CommandDrive automatically sends more power to the other wheels for real-time traction control, and improved performance across tough terrain.

**LOW-COST,
CLEAN AND
RENEWABLE
ENERGY**

POTENTIAL BENEFITS OF A 100 MW SOLAR PROJECT



20,000

equivalent households
powered by the
electricity produced



\$100's

of thousands of dollars in
new revenues annually to
the host Towns, Counties
and School Districts



>150 jobs

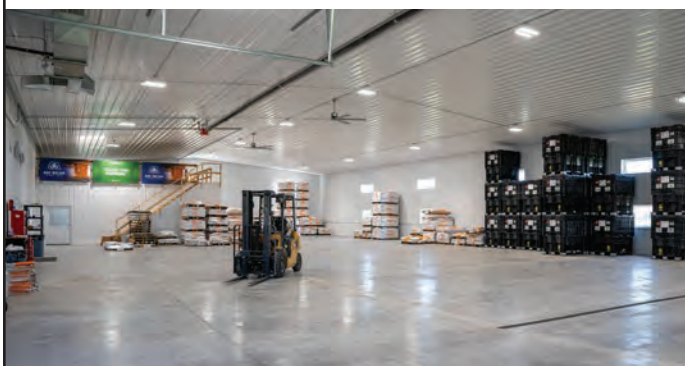
created during the
peak of construction



www.edf-re.com

Landowner@ed-re.com | 1.844.943.0723

Building Type: Multi-Purpose
Building Size: 72' x 144' x 17' + 40' x 40' x 10'
Project Number: 20-0858-00



TOP 20 FARM BUILDINGS DESIGNED BY FARMERS FOR FARMERS.

Our **Farm Plan Book** highlights **20 custom floor plans**, including various cold storage, farm shops, and multi-purpose buildings. These pole barns work hard for their owners and are guaranteed to meet your unique needs!

You can also **design your own pole barn** with our **3D Design Online Tool**. The latest update allows you to place the building design on your property using **Google Earth**. True to scale!

FBi Buildings
(800) 552-2981

SCAN ME
to pick a design!



Janson Equipment Brings the Case IH Patriot 4350 to AgroExpo



FARM NEWS MEDIA

Janson Equipment, with locations in Breckenridge, Reese and Charlotte, will be showcasing the latest in sprayer technology with a Case IH Patriot 4350 sprayer, equipped with 120' booms during the AgroExpo field demonstrations, Aug. 15 and 16.

For decades, growers and custom applicators have trusted the Patriot sprayer to take on tight application windows — but on today's operations, it takes more than timely, accurate spraying to drive profitability.

No matter how trusted and reliable, it's tough to teach an old sprayer new tricks. That's why Case IH has redesigned the Patriot 50 series sprayer from the ground up — while keeping the Agronomic Design features that matter most.

The Case IH Patriot Series sprayers, known for delivering quality application at the right time to ensure clean and healthy plants maximizing their yield potential, combine those key elements with advanced technology and connectivity solutions to take your application to the next level.

The Patriot 4350 sprayer, equipped with a 1,200-gallon capacity tank and 335-rated horsepower, is designed to help farmers and ag retailers work more productively and efficiently with its exceptional operator environment, complete vehicle control, advanced connectivity solutions

and integrated spray technology.

The completely redesigned Patriot 50 series sprayer is equipped with a luxury cab, total vehicle control and real-time connectivity, allowing you to make data-driven decisions to drive profitability.

Operators will appreciate the modern, yet luxurious, cab environment and an innovative four-bar linkage chassis suspension system that delivers superior ride quality to make time in the cab more comfortable.

A quiet, comfortable interior that boasts an abundance of glass for maximum, unrestricted visibility, a premium cab is designed to increase operator performance, also includes a superior ride quality, stability and control with a 4-bar linkage chassis suspension system.

The MultiControl Armrest layout provides exceptional ergonomics, with a comfortable operator seat that swivels 30 degrees to the right. Connected solutions are integrated into every Patriot 50 series sprayer to provide endless opportunities for your operation.

A suite of technology solutions which are capable of performing wireless file transfers, sharing guidance lines, creating prescription maps, fleet management, data sharing and product control are available as well.

AIM Command FLEX II advanced spray technology ensures consistent chemical

application rate, pressure and droplet size, with individual nozzle on/off control for increased accuracy and efficiency is a given in the new Patriot sprayer lineup.

With two customizable displays — the AFS Pro 1200 and the Viper 4+ — operators always have top-of-the-line vehicle and product control, and the real estate to see what they want when they want.

The AFS Pro 1200 display delivers complete chassis monitoring and control, while the Viper 4+ offers enhanced auto-guidance solutions and product control.

The proven cab-forward, rear-engine design helps you achieve timely application with optimized weight distribution, getting you into fields sooner with less compaction.

Strong, durable booms are built with robust material, while the boom suspension design helps provide a stable platform for product application.

Take accurate and effective coverage to the next level with the integrated Auto-Boom XRT Automatic Boom Height control that detects and accommodates changes in terrain. A new center section design minimizes boom yaw in challenging conditions — even with longer boom options.

Choose the Patriot 50 series sprayer to experience these benefits. Choose Janson Equipment Company to get a dealer partner with a fully trained staff excited to maximize these benefits for your operation.

ELECTROGATOR II™

 **Reinke**
MORE RIGHT THAN RAIN
Farm
SERVICES INC

4840 North Greenville Rd.
Lakeview, MI 48850
989-352-8411
www.farmservicesinc.com

The Electrogator – the most durable,
reliable, efficient and innovative system on
the market with the best warranties!

**Farm Irrigation
Complete Service
and Repair**

**Stop by our booth for a golden ticket
invitation!**

This ticket gives you access to our exclusive event,
where a special offer awaits you!

**Special
Invitation**

**OUTSIDE PLOT AND BOOTH
P121, P221**

MICHIGAN PROVEN.



MICHIGAN GROWN.

Lynnman Construction

lynnmanconstruction.com
facebook.com/lynnmanconstruction
Michigan's Premier Post Frame Contractor



**Specializing in Equine Buildings,
Farm Equipment Storage, Accessory
Buildings, Fully Lined & Insulated Shops
& Commercial Offices & Warehouses.**

Keith Pinkelman
517-625-5558
keith@lynnmanconstruction.com
facebook.com/lynnmanconstruction

The logo for Lynnman Construction features a stylized 'LC' monogram above the company name.

The logo for Wick Buildings features a stylized 'W' inside a circle, with the company name and 'Built for 1940' above it.

Hutson Inc. to Showcase John Deere's 'See & Spray Ultimate'



FARM NEWS MEDIA

Hutson will be demonstrating the John Deere See & Spray Ultimate, as well as other automated technologies, at 2023 AgroExpo to provide visitors with an up-close look at how this cutting-edge technology can help them in their farming operations.

As a leading John Deere dealership in Michigan, we are proud of our commitment to helping farmers become more efficient and productive.

See & Spray is one of many new offerings transforming agriculture operations into a more streamlined and profitable business model. This technology offers producers simpler methods for controlling weeds without sacrificing yield or quality. With improved accuracy, it can reduce chemical usage while still providing effective weed control.

"We believe that this technology is key to making farming operations more efficient and cost-effective," said Travis Kiesel, Hutson's VP of Precision Ag.

"We have several See and Spray machines operating in the field this spring, and they are performing very well. In most instances on corn and soybean fields, our customers are realizing a 50% savings in their application costs. That has the potential to impact a producer's bottom line."

The John Deere See and Spray Ultimate, coupled with an industry-proven application portfolio, provides an advanced level of accuracy and control that is unmatched in the industry. It can accurately detect the difference between the valuable crops and weeds in the field to then spray with pinpoint precision, reducing chemical usage while maintaining a high level of effectiveness.



Additionally, it can save producers time and money by allowing them to pay for technology only when needed. The See & Spray Ultimate can simultaneously spray two different products with one machine, providing producers greater flexibility in their operations.

The introduction of See and Spray Ultimate by John Deere is the first in the product line that allows for a cheaper upfront technology cost which will continue to improve over time and allow the producer to only pay for when and how they utilize that technology.

At this year's AgroExpo, we'll provide our customers with an up-close look at how this cutting-edge technology works and how it can help them increase efficiency on their farms. We invite everyone to visit us at the event to learn more about what the John Deere See & Spray Ultimate can do for them and how Hutson is leading the way in advanced agriculture technology.

Hutson's trained staff is prepared to assist producers every step of the way toward implementing this new See & Spray technology in their operations, according



to Kevin Shelle, Director of Precision Ag at Hutson.

"Hutson's has many trained employees to help implement this See and Spray technology for our producers today," Shelle said. "We have invested many resources and are prepared to assist, train, and support our customers as we head into the next stages of precision agriculture."

Join us at AgroExpo to get an up-close look at this groundbreaking technology for yourself and discover what it can do for your operation. We'll have training, demos, and plenty of new equipment to check out. We look forward to seeing you there!

SCHEDULE

Tuesday, August 15

7:00 - 8:30 AM

MABA Breakfast (Invitation Only)

8:30 AM

Show Opens to Attendees

9:00 - 9:45 AM

Speaker

Kristin Poley, Corn Marketing Program of Michigan

SPONSORED BY: ACRES TV

9:30 AM

Tri-County Electric Safety Demo

at Booth E712

10:00 - 10:45 AM

Speaker

Greg Wetzel, Bullydog Ag

SPONSORED BY: BULLYDOG AG

11:00 - 11:45 AM

Speaker

Mike Zahrt, Foster Swift

SPONSORED BY: FOSTER SWIFT

11:00 AM - 12:30 PM

Sprayer Demos

11:30 AM

Tri-County Electric Safety Demo

at Booth E712

12:00 - 1:00 PM

Speaker

Dr. Chris DiFonzo, Michigan State University

SPONSORED BY: HUTSON INC.

1:15 - 2:00 PM

Speaker

Mike Fraleigh, Fraleigh Law

SPONSORED BY: FRALEIGH LAW

1:30 PM

Tri-County Electric Safety Demo

at Booth E712

2:00 - 3:30 PM

Sprayer Demos

2:15 - 3:00 PM

Speaker

Kim Cassida, Michigan State University Extension

SPONSORED BY: TRICAL SUPERIOR FORAGE

4:00 PM

Show Closes

SCHEDULE

Wednesday, August 16

8:30 AM	Show Opens to Attendees
9:00 AM	FFA Tractor Driving Contest and FFA Crop Management Challenge Booths Open
9:00 - 9:45 AM	Speaker <i>Corey Guza, Ph.D., Michigan Sugar Company</i> SPONSORED BY: THE NATURE CONSERVANCY
9:30 AM	Tri-County Electric Safety Demo <i>at Booth E712</i>
10:00 - 10:45 AM	Speaker <i>Stephanie Smith, Golden Harvest</i> SPONSORED BY: GOLDEN HARVEST
11:00 - 11:45 AM	Speaker <i>Dr. Joseph Affholter, Gantec, Inc.</i> SPONSORED BY: GANTEC, INC.
11:00 AM - 12:30 PM	Sprayer Demos
11:30 AM	Tri-County Electric Safety Demo <i>at Booth E712</i>
1:00 PM	FFA Crop Management Challenge Booths Close
1:15 - 2:00 PM	Speaker <i>Mike Fraleigh, Fraleigh Law</i> SPONSORED BY: FRALEIGH LAW
1:30 PM	Tri-County Electric Safety Demo <i>at Booth E712</i>
2:00 - 3:00 PM	Sprayer Demos
3:00 PM	Show Closes

8/15 | 9:00 AM

Boosting Soil Health with Cover Crops*Kristin Poley, Corn Marketing Program of Michigan*

Cover crops provide both agronomic and environmental benefits when implemented with a management plan. This presentation will cover benefits of cover crops to soil health specifically, will take look at current research on the effects of improved soil health to corn and soybeans, and will offer management tips for starting with cover crops.

Poley is the director of research and agronomy for the Corn Marketing Program of Michigan

specializing in sustainability and soil health. She manages CMPM's contract-grant research program and participates in on-farm trials with research partners answering research questions on cover crops, soil health, and carbon. Poley has a master's degree in entomology with a focus on pest management from Michigan State University and is a certified crop advisor. She lives in St. Johns, Michigan.

SPONSORED BY: ACRES TV

8/15 | 10:00 AM

Benefits of Amplify D Emergence Aid, Wex Wetting Agent and Syntose Liquid Sugar for your Farm*Greg Wetzel, Bullydog Ag*

Actively involved in the farming community for 35 years, Greg Wetzel is passionate about helping farmers improve their crop yields as an independent crop consultant. Based in Decker, Michigan, Greg launched Bullydog Ag LLC in 2017, providing farmers agronomic services designed to improve yields while reducing input costs.

Core to the services Bullydog Ag provides farm-clients is the full suite of AgroVantage System products developed through 30 years of field trials and national research to boost the genetic potential of crops in achieving increased yields while

maximizing return on investment.

The AgroVantage System is a wholistic agronomic approach, including: in-depth soil testing to identify limiting factors and recommended nutrients to positively impact yields; on-going technical and practical training to help producers discover a completely different way of feeding plants; and quality, proven products that maximize the potential of soil and seed genetics without spending input dollars on nutrients that plants won't use.

SPONSORED BY: BULLYDOG AG

8/15 | 11:00 AM

Hot Legal Topics in Ag for 2023*Mike Zahrt, Foster Swift*

Ag producers have many legal considerations. This fast-paced conversation will cover some of the issues that may impact your operations including but not limited to: Corporate Transparency Act, Inflation Reduction Act – including energy incentives, The Secure Act 2.0, latest trends in negotiating and managing your contracts, FDA-approved drones,

and looming tax considerations.

Michael Zahrt is a business, succession and estate planning lawyer with Foster Swift Collins and Smith PC. He has significant experience in farm entity formations, business planning, succession planning, and estate planning.

SPONSORED BY: FOSTER SWIFT

8/15 | 12:00 PM

Disappearing Insects: The Consequences of Global Insect Decline*Dr. Chris DiFonzo, Michigan State University*

Chris DiFonzo is a field crops entomologist at Michigan State University. Before coming to MSU, she did a Master of Science and Ph.D. in entomology at the University of Minnesota and was a postdoc at the Volcani Center, the main agricultural research institute in Israel. She has been the field crops

entomologist at MSU for more than 26 years, with Extension and research responsibilities in corn, soybean, small grains, and specialty field crops. She also teaches the MSU courses in general entomology and pesticides.

SPONSORED BY: HUTSON INC.

8/15 & 8/16 | 1:15 PM

Wind and Solar Contracts: The Good, The Bad and the Ugly*Mike Fraleigh, Fraleigh Law*

Review and analysis of provisions commonly included in wind and solar contracts. Discussion will focus on income generation as well as long-term use and control of land subject to energy contracts. Additionally, we will address contract enforcement and issues that arise at the conclusion of the contract, such as equipment removal and land restoration.

Mike Fraleigh was raised on a family farm in Sanilac County, Michigan, and has been meeting the legal needs of Michigan farmers for more than 15 years. His practice specialty includes farm and ranch

business structure, succession planning and estate planning, as well as special needs trusts. He is a member of the American Bar Association, Wealth Counsel, and the State Bar of Michigan and a participant in several sections including Estate Planning and Administration for Business Owners, Farmers and Ranchers; Business Investment Entities, Partnerships, LLC's and Corporations; Elder Law and Disability Rights; and Probate and Estate Planning.

SPONSORED BY: FRALEIGH LAW

8/15 | 2:15 PM

Increasing the Value of your Forage Crop with Triticale

Kim Cassida, MSU Extension

Triticale can be a valuable addition to the forage crop portfolio for dairy and livestock producers and can also serve as a cover crop. MSU forage and cover crop specialist Kim Cassida will talk about forage yield, forage quality, and cover crop aspects of this relatively new crop and how it should be managed to fit into double-cropping systems.

Kim Cassida is the Extension forage and cover crop specialist for MSU, with degrees from Penn State

and the University of Maine. Her extension program focuses on all-things forage, and her research program focuses on management of alfalfa, perennial and annual forage mixtures, and the role of forages and cover crops in improving resilience of agroecosystems. In her spare time, she raises sheep.

**SPONSORED BY: TRICAL
SUPERIOR FORAGE**

8/16 | 9:00 AM

Looking to the Future: Sustainability at Michigan Sugar Company

Corey Guza, Ph.D., Michigan Sugar Co.

What's so sweet about Michigan Sugar? There's an increased focus on sustainability! As part of his job, Guza has been studying production practices that improve sugarbeet production and profitability in an environmentally sound manner. The focus in this area includes studying nutrient management and the relationship between nutrients, the environment, and sugarbeet production. Guza also has been advancing Michigan Sugar's sustainability mission through the exploration of conservation-related research trials, including using compost as a nematode deterrent, rye cover crops as an invasive weed deterrent, strip till, and multiple 4R-related fertilizer application methods for sugar beets. Join us to hear Guza speak about current innovations, partnerships, and how the Michigan Sugar team is working toward a more sustainable future!

Corey Guza was raised on a sugarbeet, dry bean, corn, soybean, wheat, and dairy farm near Harbor Beach. He earned his bachelor's degree in crop and soil sciences from Michigan State University, his master's degree in crop science from Oregon State University, and his doctorate in crop and soil

sciences focused on extension and studying the relationship between corn and weeds from MSU.

Guza came to work as an agronomist at Michigan Sugar in 2003. He later worked for Winfield United, a division of Land O'Lakes, as a region agronomist covering Michigan, Ontario, Quebec, and parts of Ohio and Indiana. He returned to Michigan Sugar in the fall of 2016 as the director of agronomy.

During his time at MSC, Guza has worked with staff to identify research opportunities, evaluate data, and assist field consultants and growers with educational training and support. His long-time support for and dedication to Saginaw Valley farmers has positioned him as a trusted advisor to both sugar beet growers and his research peers.

Guza also has been advancing Michigan Sugar's sustainability mission through the exploration of conservation-related research trials, including using compost as a nematode deterrent, rye cover crops as an invasive weed deterrent, strip till, and multiple 4R-related fertilizer application methods for sugarbeets.

**SPONSORED BY: THE NATURE
CONSERVANCY**

8/16 | 10:00 AM

One Farmer's Trash is Another Farmer's Profitability: Managing Corn Residue for your Bottom Line

Stephanie Smith, Golden Harvest

Stephanie Smith has been with Golden Harvest since 2018. She has had roles as district agronomist then district manager for Ohio and eastern Michigan prior to assuming the agronomy manager role. Smith has held multiple field agronomy, product management, and sales management roles throughout her career.

Smith brings extensive agronomic experience and passion to her role, her team, and farmers. She is a Fort Wayne, Indiana, resident and active on the family farm in southern Michigan. She received her master's degree in crop and soil science from MSU.

SPONSORED BY: GOLDEN HARVEST

8/16 | 11:00 AM

The Other Half of Soil Health

Dr. Joseph Affholter, Gantec, Inc.

Soil health is well established as being crucial to yield, stress resilience, and successful returns on investment. Many products today work to improve or supplement soil biology, structure, and/or chemistry. Much less explored is the role that plants themselves play in improving soil health, as well as ways to improve or maximize that process. New and growing research is giving us more details of how plants naturally optimize both the physical and biological aspects of the soil to maximize the entire soil-plant biome, leading to better plant growth and production. In this talk we will explore these concepts, as well as ways they can improve today's farm production to be more resilient and profitable.

Dr. Joseph Affholter is an experienced entrepreneur

and scientist, who currently serves as the commercialization program director at Michigan State University Technologies. He has been active in the entrepreneurial ecosystem for decades, having served on the entrepreneurship faculty at both Saginaw Valley State University and Central Michigan University, as well as in a research role at the Dow Chemical Company in Midland, MI. Affholter is also a co-founder of Gantec, a mid-Michigan based agricultural life science company. He is the inventor on more than 22 patents and holds a B.S. degree in chemistry from Michigan Technological University and a Ph.D. in Molecular Pharmacology from Stanford University.

SPONSORED BY: GANTEC, INC.

FARMCO DISTRIBUTING INC



AGI BATCO



AGI HUTCHINSON



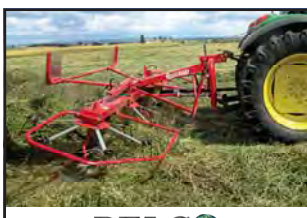
AGI REM



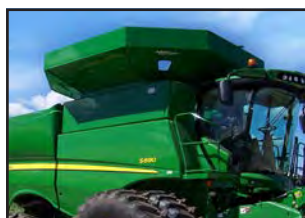
AGI WESTFIELD



Automatic



**BELCO
RESOURCES
EQUIPMENT**



DEMCO



DEMCO



DEMCO



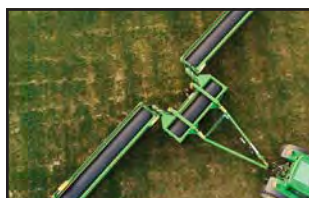
HAYRITE



**LUCK
NOW
PRODUCTS**



MAINERO



MANDAKO



**ROTO
GRIND**



SCHULTE



SCHULTE

**SERVING MICHIGAN
AGRICULTURE FOR
OVER 30 YEARS**

For more information or the dealer nearest you call

13619 S. DEWITT ROAD, LANSING, MI 48906
PHONE: 517-669-8391 FAX: 517-669-6405
www.farmco.com

Show Map



Exhibitors List

COMPANY Lot

2L Providers12
360 Yield CenterP306, P307
Acres TVP423
Ag Armour SeedsP109, P110, P209, P210
Ag Pro Farm Service / EnduraplasE705



Ag Resource ManagementE607B
Ag-1 Crop Solutions LLCE611



AgHires32
AgriGoldP322, P422
Agrituf37



AgroEcoPowerE804



AgroLiquidP414, P415
AIS EquipmentE706
Alamo Valley AgE614, E615
Aldermans Inc.E909, E910
American Metal Roofs18
Arrow Ag ServicesE616
Bayer Crop Science Dekalb/AsgrowP308, P309, P408, P409
Beck's Trailer SuperstoreE504, E604
Brown Dairy EquipmentE707A
Bullydog AgP118, P218



Burnips EquipmentE708, E709, E808, E809
Bush Hog Inc.E602
C&S Electric26
Capital EquipmentE603
CEC Electric42
Consumers EnergyE911
Corn Marketing Program of MichiganP318
Crary IndustriesE916
Crittter Barn Educational Farm47
Cushman Creek Supply29
Cutco Cutlery52
Dairy Farmers of America5
Dairyland SeedP112, P113, P212, P213
David Chapman Agency41



DF SeedsP121, P221
Diesel Injection ServiceE607A

COMPANY Lot



DigiFarm VBN30
Direct EnterprisesE907B
DTE Energy45



Ellens EquipmentE912, E913, E1013
EnviroKureP316, P416
Equitable Agrifinance28
Exapta Solutions20
Family Farm & HomeE606
Farm DepotE814, E815
Farm Services Inc.E710
Farmco Distributing Inc.E301, E302, E303, E401, E402, E403
Fbi Buildings23
Feldpausch Precision ServicesE1008, E1009
Fertilizer Dealer SupplyE505, E506
Fiber By-Products2
Forklift Tire | JAM Best One43
Fox Chrysler Dodge Jeep RamE515, E516



Fraleigh Law Firm PLLC27
Gantec, Inc.P413



GAPS FSP111, P211



Gilbert Sales & Service Inc.E507B
Gold Coast Sales, LLCP311, P312, P411, P412



Golden HarvestP106, P206



Great Lakes Ag IrrigationE813
GreenStone Farm Credit ServicesE807A
H&S Manufacturing Co Inc.E503
Harvest SolarE811
Heads Up Plant Protectant22



Hello NatureP219

COMPANY Lot

Herbruck Poultry Ranch Inc.24
HJV EquipmentE714, E715, E716
Homeworks | Tri-County ElectricE712



Hutson Inc.E1014, E1015, E1016, E1214, E1215, E1216, E1314, E1315, E1316, E1414, E1415, E1416
INA Store IncE501, E502
Indian Creek Acres, Inc.E903
IQ hub48



Janson EquipmentE701, E702, E801, E802
Kaeb Sales Inc.E904, E905
Kubota Tractor CorporationE101, E102, E103, E201, E202, E203
La Crosse SeedP319
Legend Seeds Inc.P120, P220
Lifetime Metal SalesE1011
Lynmann Construction13
Martin TillE610
MDARD: Ag Development Division50
MDARD: MAEAPE907A
MDARD: Right To Farm51
Meekhof Tire Sales & ServiceE608
Mensch ManufacturingE612
MI FFA Alumni & FriendsE1002
Michigan Ag CommoditiesE711
Michigan Ag Today15
Michigan AgrAbility34
Michigan Biosolids TeamP123
Michigan CATE1012
Michigan Crop Improvement Association38



Michigan Farm BureauE713
Michigan Foundation For Agriculture3, 4
Michigan Iron & EquipmentE810
Michigan Soybean CommitteeP418



Michigan Valley IrrigationE508
Midwest Laboratories14



Miedema Asset Management39
Mini Donuts & More | Food TruckE902
MSU ExtensionP222, P223
MSU Institute of Agricultural Technology25
MWC6

COMPANY

Lot #

COMPANY

Lot #

COMPANY

Lot #



Norwood Sales Inc.	E510, E511
Orthman Manufacturing	P406, P407
OXBO	E1005
Pauli Ford	E703
Peoples Company	21
Pioneer	P116, P117, P216, P217
Pivot Bio	E514
PM Precision Ag	P314, P315
Pond Hill Sales & Service	E512, E513
Powerlift Doors of Michigan	33
Puck Enterprises	E1007B
Quality Solar LLC	E613
RangeLine Group	E908



Redbrand - Liberty Steel & Wire	35
Renk Seed Company	P310, P410
RH Wiles Sales Inc.	E805, E806
Richmond Brothers Equipment	17
Rob-See-Co. LLC	P114, P115, P214, P215
Roberts Dairy Service	E507A
Searles Cleaning Systems	1
Seven Oaks Seed LLC	P320, P321, P420, P421
Star of the West Milling Inc.	P419
State of Michigan MIOSHA Consultation, Education and Training Division	49
Stine Seed Co.	P107, P108, P207, P208
Texas Refinery	11
The KBH Corporation	E1010
The Nature Conservancy	E816

The Parts Store - NAPA	E704
Timac Agro USA	P317, P417
Timeless Fence Systems	E601
TriCal Superior Forage	P323
USDA Farm Production and Conservation	44
Valley Farms Supply Ritchie Industries	E1007A
WD 40	19
Williams Farm Machinery	E906



Family. Value. Trust.

Wonderland Tire	E1006
Yeo & Yeo CPAs & Advisors	16
Young Chevrolet	E914, E915
ZFS Ithaca Zeeland Farm Services	E707B
Zimmerman Manufacturing	E807B

**Visit us
at Booth
P309**

Amy Allen District Manager
Dowling, MI • 269-720-3150

Henry Buiting District Manager
Applegate, MI • 989-284-6799

There is a great deal that goes into every single seed before it even gets to you. Being on the forefront of science, Renk Seed has been in the agriculture industry for 175 years. Renk Seed customers can be confident in our products knowing that we are committed to delivering the best technology to the field.



★
AMERICAN
OWNED AND OPERATED

RENKSEED.COM



KUBOTA BV SERIES LESS WORK. BETTER BALES.



Unmatched dependability and efficiency is built in. Field after field these hard-working round balers create dense bales and tight outer layers with hassle-free engineering designed to help you have your best season yet.

Visit us to find out why the BV is the right baler for you.

Alanson

Ginop Sales, Inc.
231-548-2272
www.ginopsales.com

Clare

Capital Equipment
989-386-2192
www.cedealer.com

Dryden

Rosy Bros, Inc.
810-796-3770
<http://rosybrosinc.com>

Jackson

Kubota of Jackson
517-784-3146
www.kubotakings.com

St. Joseph

Ausra Kubota
269-683-7272
www.ausrakubota.com

Carleton

Carleton Farm Supply
734-654-8222
www.carletonfarmsupply.com

Coldwater

Kubota Kings
517-279-8002
www.kubotakings.com

Fremont

Pell's Farm Service, Inc.
231-924-2510
www.pellsinc.com

Lennon

Alderman's Inc.
810-621-4201
www.aldermans.com

Williamsburg

Ginop Sales, Inc.
231-267-5400
www.ginopsales.com

KubotaUSA.com

Optional equipment may be shown.



© Kubota Tractor Corporation, 2020



THANK YOU TO THE FFA Crop Management Challenge Sponsors!

PLATINUM



GOLD



BRONZE



SILVER



eagle valley
AG RISK ADVISORS, LLC



CROP PROTECTION



CORN SEED



SOYBEAN SEED



Enduring strength.
Uncompromising
quality.

It's no wonder our post-frame
buildings last a long, long time.
We only use the highest quality
lumber. We carefully shape our
own steel and trusses. And our
Wick-trained crews know only
one way to install our designs:
the right way.

Want the best quality at a
competitive price? Call us.
We'll make your hard-earned
buck last a long, long time.

Contact us today for your free
quote!

800-356-9682
or
WickBuilding.com



**AGRO
EXPO**
connect. discover. innovate.

**Wick
Buildings**
Authorized Wick Builder



**PLAN
PREPARE
PROSPER**

**Now is the
time to build
a strong
foundation!**

- Family farm succession and transition planning
- Wills, trusts and special needs trusts
- Estate and trust administration
- Protection of disabled children and adults



Protecting you, your loved ones and your farming operation.

East Lansing and Troy | www.FraleighLaw.com | 1-800-928-0034



HEAVIEST BUILT LAND ROLLER ON THE MARKET



Increase crop yields | Faster decomposition of corn stalks | Increase seed germination | Vigorous alfalfa regrowth

FARMCO DISTRIBUTING INC

MORE THAN A ROCK ROLLER
WORKING WIDTHS FROM 6' TO 85'

For more information or the dealer nearest you contact:
13619 S. DEWITT ROAD, LANSING, MI 48906
PHONE: 517-669-8391 FAX: 517-669-6405
www.farmco.com

Grow Anything
NATURALLY



PELLETIZED POULTRY FERTILIZER

- Stimulates soil health
- Improves crop production
- Excellent source of slow releasing nitrogen

CONTACT: Dan Karrar
O: 616-902-2037
E: dkarrar@herbrucks.com

Herbruck's™

For more info visit:
www.Herbrucks.com

Ellens Equipment to Profile New Holland's Guardian SP Series Sprayers at AgroExpo Field Demos

FARM NEWS MEDIA

Ellens Equipment, with locations in McBain, Ithaca and Beal City, will be bringing a New Holland SP Series sprayer equipped with a 120' truss boom to the AgroExpo field demonstrations.

New Holland is redefining its lineup of self-propelled sprayers, including the SP310F, SP370F and SP410F Guardian front boom sprayers, which feature new technological and precision capabilities.

The Guardian lineup utilizes truss booms (mono-booms are optional) with 15" or 20" nozzle spacings, offering the industry's highest ground clearance of 76" and can be adjusted right from inside the cab.

These sprayers offer up to 410 hp, up to 1,600-gallon stainless steel tanks, and an optional 300 gpm high-capacity product pump to enhance efficiency in and out of the field while covering more acres per hour in the field.

The SP Series front boom sprayers incorporate precision technologies from Raven, including Slingshot from Raven and IntelliSpray II technology for precise application every time. The data generated from these features are collected, streamlined and aggregated by Raven's Connected Workflow system.

The Connected Workflow system works by syncing data from the office to the field and back again for simplified management of work, idle and transit time. The data can be used to create programs and strategies like herbicide rate prescriptions for individual fields and is accessible by the operator through the Slingshot mobile app.

With the incorporation of IntelliSpray II, the Guardian sprayers now offer the most precise nozzle control system on the market and ensure unmatched droplet coverage accuracy, up to 2.5 times more accurate than comparable systems, helping growers optimize coverage, minimize skips and overlaps, and reduce input costs.

The IntelliSpray II pulse width modulation system leads the industry with a broader range of applications: Standard, Bypass, Variable Pressure, High Flow, High Flow VP and On/Off. Higher flow and pressure ratings of up to 17% increased flow and operating pressure and greater level of accuracy due to its 20Hz pulse rate.

The utilization of Slingshot on the Guardian sprayers empowers operators



and growers to make more data-driven decisions in and out of the field and generates a high-level view of data from beginning through completion of a job.

Working alongside the Slingshot

telematics is the VSN® Visual Guidance, which uses state-of-the-art image sensor and processing technologies to deliver a quicker response rate, better overall sprayer control, reduced operator fatigue and improved data collection.

Protection

Made

Easy

with Heads Up® Seed Treatment

Tired of losing yield to white mold & SDS?

Next year, ask for Heads Up®.

**Visit us at AgroExpo!
HeadsUpST.com**



The visual guidance system uses cameras and radars to guide the boom and drive line of the sprayer. The use of the VSN system has proven to save time and financial resources by minimizing the margin of error and crop damage that can be inflicted by self-propelled sprayers.

MAXIMIZING PRODUCTIVITY IN THE FIELD WITH ADDITIONAL PRECISION CAPABILITIES

Each Guardian sprayer comes equipped with supplemental precision technology that affects the operation of the sprayers, from turning to steering to spraying for maximized productivity.

- **IntelliView 12 and Viper 4+** displays are intuitive and customizable, allowing operators to monitor their machine's vital functions at a glance, including suspension information, liquid management control, auto rinse functionality, four-wheel steering, tread width adjustments and more.
- **IntelliField and Slingshot** will visualize where other tractors are moving in the field and provide data on the productivity of all machines.
- **IntelliSteer Auto Guidance** maintain spray accuracy while eliminating row skips and overpasses with direction control and T3 terrain compensation.



Knowledge • Products • Support
SERVICING MICHIGAN
 • Custom Planters
 • Farm Technology
 • Wear Parts
www.PMPrecisionAg.com

Is **YOUR** planter set **RIGHT?**



Ag Leader Precision Planting **360 YIELD**

Need more information or want to know how we can help you?
Call: 517-308-9950 or Visit Us: PMPrecisionAg.com

PM Precision Ag
 @pmprecision



HARVEST EQUIPMENT



RELIABLE • EASY TO OPERATE • EFFICIENT • SAFE

For more information or the dealer nearest you call

FARMCO DISTRIBUTING INC

13619 S. DEWITT ROAD, LANSING, MI 48906
 PHONE: 517-669-8391 FAX: 517-669-6405
www.farmco.com

See the Fendt Rogator 900 Series in Action



FARM NEWS MEDIA

If you haven't seen the Fendt 900 series sprayer in action yet — you're in luck.

Farm Depot, with locations in Caro, Ionia and Schoolcraft, will be bringing one to the AgroExpo field demonstrations, Aug. 15 and 16, giving many Michigan farmers a first-time look at one of Fendt's latest product introductions to the North American market.

Launched in August 2021, the new Fendt Rogator 900 Series applicator — including the RG932, RG934, RG934H, RG937 and the RG937H — provide operators a single machine for applying liquid or dry crop-care products at any time, to any size crop thanks to the adjustable clearance feature, according to Farm Depot's Bryan Roberts.

"The Fendt Rogator is a self-propelled, rear-mounted 120' boom applicator with dual-position, adjustable crop clearance for use from pre-plant to tall crops," Roberts said.

"The H-models adjust between standard heights to 76 inches of high clearance in less than 45 seconds with the push of a button. And, it can also be switched between liquid, dry pneumatic, or dry spinner delivery systems in as little as two hours."

According to Roberts, the industry-leading LiquidLogic system comes standard on the Fendt Rogator, providing the product and time-saving benefits of a recirculating boom, nozzle control, and much more.

Dry systems include AirMax Precision, New Leader 4500 Edge, and New Leader G5 boxes available with multiple bins and

section control.

"On top of it all — with the in-crop Vision camera steering system with tall crop radar sensors — this machine delivers year-round accuracy, consistency, and comfort to the operator from day one," Roberts added.

As crop production practices evolve and farmers make more late-season passes to apply nutrients and fungicides or seed cover crops, the need for high-clearance equipment is greater than ever to clear tall crops like corn, sunflowers and others.

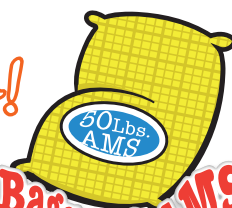
"Now, farmers can use the Fendt Rogator 900 as their one machine to apply liquid or dry products any time — pre-plant or postemergence in short or tall crops and after harvest for fall fertilization, burndown

TORCH

AMMONIUM SULFATE REPLACEMENT

Herbicide and Pesticide Enhancer!

No More 50lb. Bags of AMS



Torch will Replace:

- Surfactants
- Anti-Drift
- pH Buffer
- Stickers
- Softners

It's HOT!

One Gallon treats 1200 Gallons of Solution



Save time & money by adding Torch to your spray program and get **SUPERIOR RESULTS.**

• Rainfast in 30 minutes!

Michigan Rep
Richard Russell
269-569-4073
russellrichard018@gmail.com

Distributor:
Cushman Creek Supply
(231) 924-7014
Holton, Michigan 49425



or cover-crop seeding," Roberts said.

The Rogator 900 series models have AGCO Power 8.4L engines and offer liquid capacities ranging from 900 to 1,300 gallons, or dry spinner systems with capacities ranging from 253 to 330 cubic feet.

Besides the RG932, the other four models can be equipped with the Air-Max Precision R1 or R2 pneumatic boom spreader, ranging from 215 to 275 cubic feet in capacity.

Steel booms of 90', 100' and 120' lengths with 10", 15" and 20" nozzle spacing are available to suit specific width, volume and broadcast needs. An optional aluminum 132' boom, 5% lighter than a 120' steel boom, is also offered.

Operators of the new Rogator 900 machines will benefit from the automatic traction control of the AWD SmartDrive

system. Turn-compensated wheel speed provides independent control of each wheel to assist in tight turns and reduce soil disruption and crop damage.

Optional GatorTrak 4-Wheel Steer offers a tight, 16.5" turning radius that dramatically improves field maneuverability, crosses fewer rows and reduces compaction.

Fendt Rogator 900 Series includes these features and options:

- A variable fan with reversing function helps clear the engine cooling package of pollen and fine dust, increasing cooling efficiency and reducing downtime to clear filters.
- The cab features dual activated-carbon filters and a state-of-the-art cab pressurization fan for protection from dust, aerosols and vapors.
- More shoulder room, Air-Ride seat suspension and a heated and cooled seat provide maximum comfort for long days in the machine.
- A range of nozzle, section and boom-height control options are available with the choice of two technology packages for precise application. The EZ-Drops drop tube kit can be added for placing late-season nitrogen and cover-crop seed below the crop canopy.



Fields of opportunity await.

Crop Finance | Crop Insurance
Real Estate | Equipment

Agricultural finance has never been simpler. Reach out to your local experts in the field or visit armlend.com to get started!



Daniel Grube
8892 N 32nd Street
Richland, MI 49083
419-799-1845
dgrube@armlend.com



Jill Miller
805 S Van Dyke Road | Ste. D
Bad Axe, MI 48413
989-315-7930
jmiller@armlend.com



ARM is an equal opportunity provider.

THE SEED YOU NEED THE PEOPLE YOU TRUST

Growers trust GAPS FS to deliver top-performing hybrids and varieties that produce results at harvest. We offer seed solutions and local expert recommendations tailored to each of your fields. Contact your local GAPS FS Crop Specialist today to learn more about FS InVISION™ Seed Corn and FS HiSOY® Soybeans.



3151 W. Fillmore Rd. | Ithaca, MI 48847 | Phone: (989) 875-7661

©2023 GROWMARK, Inc. All Rights Reserved. M107882

Michigan's sustainable future

- DTE currently has 20 wind parks and 33 solar parks throughout the state of Michigan, which together generate enough clean energy to power more than 750,000 homes.
- By 2025, our renewable energy assets will generate enough clean energy to power more than 1 million Michigan homes.
- DTE's renewable projects are also helping to strengthen Michigan's economy by providing additional tax revenue for local communities, supporting thousands of local jobs, and supplying extra income for local farmers who participate in our projects.



DTE

Ag Pro Farm Service to Showcase the Latest in Drone-Spraying Technology

FARM NEWS MEDIA

Michigan farmers will get to see the newest and biggest in drone spray technology during the AgroExpo field demonstrations, Aug. 15 and 16.

According to Ag Pro Farm Service's Gabe Martindale, there will be two drone presentations each day — one in the morning and again in the afternoon.

"You're getting aerial application, but it's a lot more precise," said Martindale, an Ag Pro Farm Service drone pilot. "It's just like an airplane, except it's a lot more precise and helps maximize your crop yield."

A locally owned and operated agricultural retail and consulting service that started in 2012, Ag Pro Farm Service LLC offers agronomy, soil sampling, and equipment services, among other items.

The Corunna-based company will now showcase its custom spray application via its DJI Agras T40 drone. At AgroExpo, Martindale will walk through equipment set-up and steps taken to complete a spray mission using the 10.5-gallon spray drone.



"It's a new and upcoming technology," Martindale said. "We're going to get out there and get some acres under our belt. Everybody we've talked to about using this technology — it's an immediate yes."

Also discussed at AgroExpo will be the advantages of utilizing drone technology for fungicide and cover crop applications, setting up boundaries, and rules and regulations. Farmers can access the technology via the DJI Smart Farm app.

Martindale said the spray technology is ideal for row crops.

"If a farmer calls and wants their field sprayed, they just give me their road names or coordinates and then I just map it out right from my desk and load it in," Martindale added. "And then we go to work."

Ag Pro Farm Service's AgroExpo booth will also feature Enduraplas fertilizer tanks, nurse trailers, and side-by-side sprayers.

SCHULTE

RS320
"Jumbo"
Rock Picker



5026
Rotary Cutter



RS320 "Jumbo" Rock Picker

- Extra large 3.2 cubic yard (2.43 m³) hopper
- T-iron tapered grate with 3/4" bottom and 1/2" top material virtually eliminates all small rock jamming
- 48" grate will pick at least 50 percent less dirt and trash than most conventional reel type models
- Removes surface rock from 2" to 28"

5026 Rotary Cutter

- 26' 2" working width
- Hydraulic phasing cylinders for level lift
- Spring steel bushings at all major pivot points
- Suspension for centre and wing frames
- 10 GA deck with front half deck protection rings

FARMCO DISTRIBUTING INC

For more information or the dealer nearest you contact:

13619 S. DEWITT ROAD, LANSING, MI 48906

PHONE: 517-669-8391 FAX: 517-669-6405

www.farmco.com

Quality • Service • Value • Trust

See Precision Planting's Sprayer Technology Retrofit Product Line

FARM NEWS MEDIA

Precision Planting, well known for its reputable technology upgrades to corn planters, is applying the same concept to sprayers, allowing growers to upgrade older machines to next-generation technology without switching sprayers.

According to Precision Planting's Jason Koning, farmers attending the AgroExpo field demonstrations will be able to see the company's ReClaim, Symphony, and Vision sprayer technology retrofit products.

"These products will allow you to retrofit your current sprayer and save costs on controlling weeds, insects, and diseases," Koning said. "Virtually any sprayer on your farm can be retrofitted with the latest technology, including self-propelled as well as pull-type units."

RECLAIM BOOM PRIMING AND CLEANOUT

ReClaim is Precision Planting's new boom recirculation retrofit, for easy boom priming and more effective boom cleanout Koning explains, and is designed to be added onto a farmer's existing sprayer with electric or standard nozzles.

"Traditional sprayers require farmers or operators to spray product on the ground to prime the width of the boom. It's not uncommon for more than 50 gallons of product to be sprayed, causing a hot spot of chemicals."

With Precision's ReClaim technology, chemicals mixed in the tank can be circulated through the booms and back to the tank without spraying any chemical on the ground.

ReClaim uses a single rocker switch in the cab to engage recirculation, and once recirculation is completed, farmers are ready to spray with the correctly mixed chemical across the entire boom.

ReClaim also provides improved nozzle bar section cleanout, according to Koning.

"If your sprayer has a clean water tank, just open the flow from there and engage ReClaim," Koning said. "Clean water will circulate through every nozzle bar section and return back to the tank, eliminating end-cap dead zones where sediment can accumulate."

SYMPHONY NOZZLE CONTROL

Precision's Symphony Nozzle Control system is designed to maintain consistent pressure across the entire boom, along with swath control and turn compensation for consistent spray coverage across



every acre of the field, regardless of application rates or ground speed.

"Symphony is Precision Planting's new Pulse Width Modulation (PWM) nozzle control with capabilities to manage droplet size pressure, and even targeted spraying," Koning said.

With PWM nozzles, the liquid flow rate through each nozzle is managed via an intermittent, brief shutoff of the nozzle flow activated by an electric solenoid that replaces the conventional spring-loaded check valve and is controlled by the Precision Planting Gen3 20/20 system.

VISION CAMERA TECHNOLOGY

The Symphony Nozzle Control System is being designed to pair with the Precision Planting's Vision Camera module for weed identification, targeted spraying, machine guidance and crop scouting,

according to Koning.

"With Vision camera technology and artificial intelligence, Precision Planting can provide operators with weed pressure maps, stand counts, and row guidance," Koning said. "The combination of the Vision and Symphony systems will allow spray rates to be varied within the label rate to be effective against the weed pressure in a specific area."

In the future, Koning expects the package will appeal to growers who are targeting growing weeds, while also wanting to apply a residual herbicide across the entire field.

"Precision Planting is actively researching the best way to spot spray growing weeds while at the same time laying down a blanket residual herbicide to control emerging weeds, all using the 20/20, Symphony and Vision technologies," Koning said.

Join us at the AgroExpo 2023!

Stop by our
outside booth #P323
to learn more about triticale



Tuesday August 15 at 2:15 – 3 pm in the speaker tent
Kim Cassida, MSU Forage and Cover Crop Specialist
will talk about forage yield, forage quality, and cover crop aspects of triticale and how it should be managed to fit into double-cropping systems.

KAEB
SALES • INC
kaebsales.com

Kaeb Sales, Inc. is dedicated to serving Michigan customers with dairy, hog and livestock equipment. We are your local GEA Manure Equipment Dealer

Parts Drop Location in McBain, MI! Call for details!



UPS Available daily!

Rental tanks and pumps available!

We can get parts for all makes of Liquid Manure Equipment!

GEA Tankers, Pumps and Manure System Design & Manufacturing

Large Parts Inventory & 4 On-Road Service Trucks
New GEA 10500 gal. Spreader In Stock

We can help repair your GEA Manure Equipment, or with routine maintenance!
Call us today for all your manure needs!

Kaeb Sales Inc
613 E. Chicago Rd.
Jonesville, MI 49250
(517) 995-5060

Kaeb Sales Inc.
4520 S Division
Wayland, MI 49348
(616) 877-4616

New Location
Kaeb Sales Inc.
760 N Vandyke
Bad Axe, MI 48413
(517) 673-4357

GEA engineering for a better world

Michigan Dealer
For Artex Spreaders
(Spreaders in Stock)



EXCLUSIVE DISCOUNTS FOR FARM BUREAU MEMBERS
LOW RATE FINANCING AVAILABLE*
on all new Farmall® series tractors

PLUS \$200

FARM BUREAU DISCOUNT**

- Farmall compact A series
- Farmall compact C series
- Farmall utility A series
- Farmall utility C series
- Farmall utility U series
- Farmall 100A series
- Farmall N series
- Farmall V series

Print your certificate today!†
Visit <https://www.michfb.com/mi/>

ALDERMANS
Lennon, Michigan (810) 621-4201
www.aldermans.com

Come See Us
At Agro Expo
Booth E909-910!

* For commercial use only. Customer participation subject to credit qualification and approval by CNH Industrial Capital America LLC. See your participating Case IH dealer for details and eligibility requirements. Down payment may be required. Offer good through December 31, 2023. Not all customers or applicants may qualify for this rate or term. CNH Industrial Capital America LLC standard terms and conditions will apply. This transaction will be unconditionally interest free. Offer subject to change or cancellation without notice.

** Offer available through December 31, 2023. Available on new Case IH Farmall tractors. This offer may be combined with other offers, but is not valid on prior purchases. A valid Farm Bureau® Membership Certificate is required, which may be obtained at fbveteran.com/case. See your participating Case IH dealer for details and eligibility requirements. Not available in all states. Offer subject to change or cancellation without notice. FARM BUREAU, the letters FB, the FB National Logo, and the State Farm Bureau Logo are service marks of the American Farm Bureau Federation used under license by Case IH.

† A current Farm Bureau membership verification certificate must be presented to the Case IH dealer in advance of product delivery to receive the incentive discount.
©2023 CNH Industrial America LLC. All rights reserved. Case IH and CNH Industrial Capital are trademarks registered in the United States and many other countries, owned by or licensed to CNH Industrial N.V., its subsidiaries or affiliates.

CNH INDUSTRIAL CAPITAL

CASE IH



10231 Rose Blvd.
Morrice, MI 48857
Near the I-69 and M-52
Interchange

517-625-4590

www.michironandequip.com



Compact Tractors
Front Loaders
Backhoes
Zero Turn Mowers
Utility / Equipment Trailers

KIOTI
run ahead of the pack
KIOTI® Tractor
FERRIS
Ferris ZTR
Liberty INDUSTRIES INC.
Liberty Trailers



MEEKHOF TIRE
Sales & Service, Inc.

PLATINUM



GOLD



SILVER



BRONZE



WE APPRECIATE ALL YOUR SUPPORT

SPEAKER



TABLE



TRAM



BLEACHER



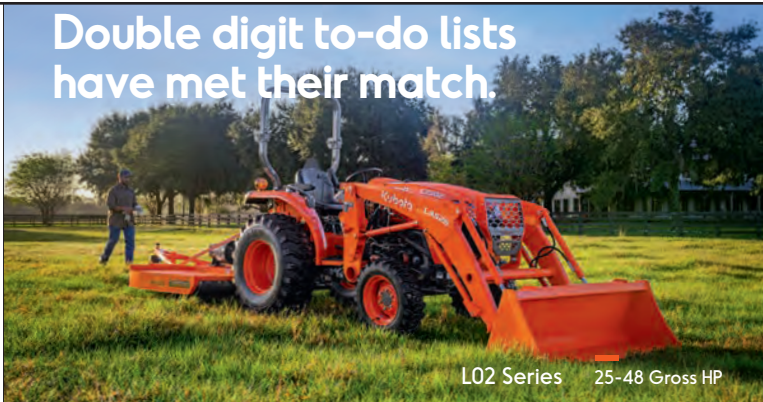
FUEL



WATER



Double digit to-do lists
have met their match.



L02 Series 25-48 Gross HP



Take care of your land with the Kubota L02 Series. Dependable performance and reliability. More comfort. And the versatility you need to cross jobs off the list. Visit your Kubota dealer today for a demo.*

- #1 rated tractor brand for durability and owner experience in the U.S.**
- Kubota diesel engine and Kubota DT or HST transmission
- Steel hood and fenders for increased durability

BURTON
FLINT NEW HOLLAND INC.
810-744-2030
www.flintnewhollandinc.com

SPARTA
KENT EQUIPMENT
616-675-5368
www.kentequipment.com

KubotaUSA.com

*Subject to availability. **Award based on 2021 Progressive Farmer Reader Insights Tractor Study. © Kubota Tractor Corporation, 2023. This material is for descriptive purposes only. Kubota disclaims all representations and warranties, express or implied, or any liability from the use of this material. For complete warranty, safety, incentive offer and product information, consult your local dealer or go to KubotaUSA.com.

Progressive
FARMER
READER INSIGHTS

Pole Buildings

"Free Quotes"

Serving Southern Michigan, Ohio, Indiana & Northern Kentucky



We Will Custom Build Any Size

30'x40'x12'

1-16'x11' sliding door
1-3'-0"x6'-8" walk door
Trusses 4' O.C.

40'x64'x14'

1-20'x14' sliding door
1-3'-0"x6'-8" walk door
Trusses 4' O.C.

48'x80'x14'

1-20'x12'-8" sliding door
1-24'x14' sliding door
1-3'-0"x6'-8" walk door
Trusses 4' O.C.

60'x120'x14'

1-20'x12'-6" sliding door
1-24'x14' sliding door
1-3'-0"x6'-8" walk door
Trusses 4' O.C.

Sample Packages - Call For Pricing

Call for all your building needs!

Or check us out on Facebook!



Prices Good Within A 100 Mile Radius

Arnold Lumber Co.

Decatur, Indiana

1-800-903-4206

Steel Building Package

100' x 125' - 16'

2- 16' x 14' overhead doors with openers; 1- 3/0 x 7/0 man door

Sample Package - Call For Pricing

STAR
BUILDING SYSTEMS

FABRAL
METAL WALL AND ROOF SYSTEMS

High-Calcium Stedman Ag-Lime



AGRICULTURAL LIME

- Neutralizes Acidic Soil
- Reduces Need To Fertilize
- Increase Yields
- Neutralizing Value (CCE)* 93.40%

* Value based on recent testing and is subject to change. Call for most recent test results.



Driveways
Large Or Small



RIP RAP
Erosion Control

CHENEY LIMESTONE CO.
HI-CAL AGLIME & STONE
EST. 1946

269-763-9541

9400 Sand Road

Bellevue, MI 49021

www.cheneylimestone.com

E-mail: info@cheneylimestone.com





Farm Bureau Members Receive a \$500 Exclusive Cash Reward* on an Eligible New Super Duty®, F-150®, Ranger®, or Maverick®



FORD F-150

Computer-generated images with available features shown.

\$500

Exclusive Cash Reward*



FORD SUPER DUTY

FORD RANGER

FORD MAVERICK

Visit **FordRecognizesU.com/FarmBureau** today for complete offer details!

ANN ARBOR
VARSITY FORD SALES, INC.
734-996-2300
www.varsityford.com

HOLLAND
BARBER FORD
616-396-2361
www.barberford.net



BAY CITY
HAGEN FORD, INC.
989-684-4600
www.hagenford.com

LOWELL
ZEIGLER FORD OF LOWELL
616-897-8431
www.hzlowell.com

CARO
MOORE MOTOR SALES
989-673-4171
www.themooreautogroup.com

MIDLAND
MIDLAND FORD LINCOLN INC.
989-631-0040
www.midlandford.com

SOUTH HAVEN
DON WOODHAMS INC.
269-637-2137
www.woodhamsford.com

COLDWATER
COLE FORD LINCOLN
517-278-5661
www.colefordlincoln.com

SAGINAW
WILSON FORD LINCOLN
989-792-1700
www.wilsonfordsaginaw.com

STANDISH
RICHARDSON FORD
888-376-2591
www.richardsonstandish.com

FARMINGTON HILLS
SERRA FORD FARMINGTON HILLS
248-474-1234
www.serrafordfarmingtonhills.com

SOUTHFIELD
AVIS FORD, INC.
248-355-7500
www.avisford.com

WESTLAND
NORTH BROTHERS FORD, INC.
734-421-1300
www.northbros.com

GRAND RAPIDS
TONY BETTEN & SONS FORD, INC.
616-363-6841
www.bettenford.com

SOUTHGATE
SOUTHGATE FORD
734-282-3636
www.southgateford.net

*Farm Bureau Recognition Program is exclusively for active Farm Bureau members who are residents of the United States. \$500 Exclusive Cash Reward on the purchase or lease of an eligible new 2022/2023/2024 Ford Maverick, Ranger, F-150 or Super Duty. This incentive is not available on F-150 Lightning®, F-150 Raptor®, F-650 and F-750 Super Duty. This offer may not be used in conjunction with most other Ford Motor Company private incentives or AXZD-Plans. Some customer and purchase eligibility restrictions apply. Must be a Farm Bureau member for 30 consecutive days prior to purchase or lease and take new retail delivery from an authorized Ford Dealer's stock by January 2, 2024. Visit FordRecognizesU.com/FarmBureau or see your authorized Ford Dealer for qualifications and complete details. Note to dealer: Claim in VINCENT using #38656.

DEMCO APPLICATION EQUIPMENT



BUILT FOR YOUR CONVENIENCE AND EFFICIENCY

For more information or the dealer nearest you call

FARMCO DISTRIBUTING INC

13619 S. DEWITT ROAD, LANSING, MI 48906
PHONE: 517-669-8391 FAX: 517-669-6405
www.farmco.com

MANITOU

MT 733

LIFT HEIGHT OF 22FT 8IN

12FT 10IN OUTREACH

7275LB LIFTING CAPACITY

116HP ENGINE



Square Bale Forks



Sugar Beet Bucket



Silage Facing Bucket



Manure Forks w/Grapple



Bale Clamp Classic



**TRI COUNTY
EQUIPMENT**

WWW.TRICOUNTYEQUIPMENT.COM

**CALL TERRY MITCHELL FOR A QUOTE
(517) 749-0593**

**SANDUSKY LOCATION
989 W. SANILAC RD.
(810) 648-2404**

DECRA

Roofing Systems

DECRA has been the preferred choice for Stone-Coated Steel Roofing for 60 years! A beautiful, low maintenance metal roof solution with:

- 120mph Wind Resistance
- Class 4 Impact Resistance
- Limited Lifetime Warranty

Lifetime Limited
DECRA
Warranty

With its hidden fasteners and interlocking panels that won't crack, break, warp, curl or split, DECRA is the overall best choice when it comes to your roof.

Call us for info on where to buy.



Advanced Roofing Products
6473 S. State Road 15
Claypool, IN 46510
1-888-492-2609
www.arpsteelshingles.com



Hungry?

**CHECK OUT
OUR FOOD
VENDORS**



**WILSON'S
MEAT WAGON**



**LONDON
BROIL**



**CHUCKIE D'S
BBQ**



**FUN
FOOD**



**WHO DOESN'T
LIKE PIZZA**



**MINI DONUTS
AND MORE**



BYOB
(Build Your Own Bowl)

MAKE THE
DeltaForce
✓DECISION



Purchase DeltaForce
Between 7/1/23 - 8/31/23



\$50
per row rebate

 **Precision
Planting**

**Precision Planting
Premier Dealers**

FOWLER
FELDPAUSCH PRECISION
SERVICES LLC
989-593-3464
feldpauschprecisionservices.com

EATON RAPIDS
PM PRECISION AG
517-308-9950
pmprecisionag.com

MARLETTE
TAYLOR AG SERVICES
989-553-4068

DEXTER
BROADVIEW AG SOLUTIONS
989-529-9016

OAKLEY
CONLEY'S PRECISION AG &
SERVICES
989-494-8952
conleysprecisionag.com

Farm Bureau®



EXCLUSIVE DISCOUNTS FOR FARM BUREAU MEMBERS

**LOW RATE
FINANCING AVAILABLE***

on all new Farmall® series tractors

PLUS

**\$200
FARM BUREAU
DISCOUNT****

- Farmall compact A series
- Farmall compact C series
- Farmall utility A series
- Farmall utility C series
- Farmall utility U series
- Farmall 100A series
- Farmall N series
- Farmall V series

Print your certificate today!† Visit <https://www.michfb.com/mi/>

ADRIAN
REDLINE EQUIPMENT
517-263-1395
www.redlineequipment.com

BRECKENRIDGE
JANSON EQUIPMENT COMPANY
989-842-3141
www.jansonequipment.com

CHARLOTTE
JANSON EQUIPMENT COMPANY
517-543-0070
www.jansonequipment.com

FRANKENMUTH
WEISS EQUIPMENT
989-652-6151
weissequipment.com

LENNON
ALDERMAN'S INC.
810-621-4201
www.aldermans.com

LITCHFIELD
WELLS EQUIPMENT SALES
517-542-2376
www.wellsequipmentsales.com

REESE
JANSON EQUIPMENT COMPANY
989-868-4118
www.jansonequipment.com

* For commercial use only. Customer participation subject to credit qualification and approval by CNH Industrial Capital America LLC. See your participating Case IH dealer for details and eligibility requirements. Down payment may be required. Offer good through December 31, 2023. Not all customers or applicants may qualify for this rate or term. CNH Industrial Capital America LLC standard terms and conditions will apply. This transaction will be unconditionally interest free. Offer subject to change or cancellation without notice.

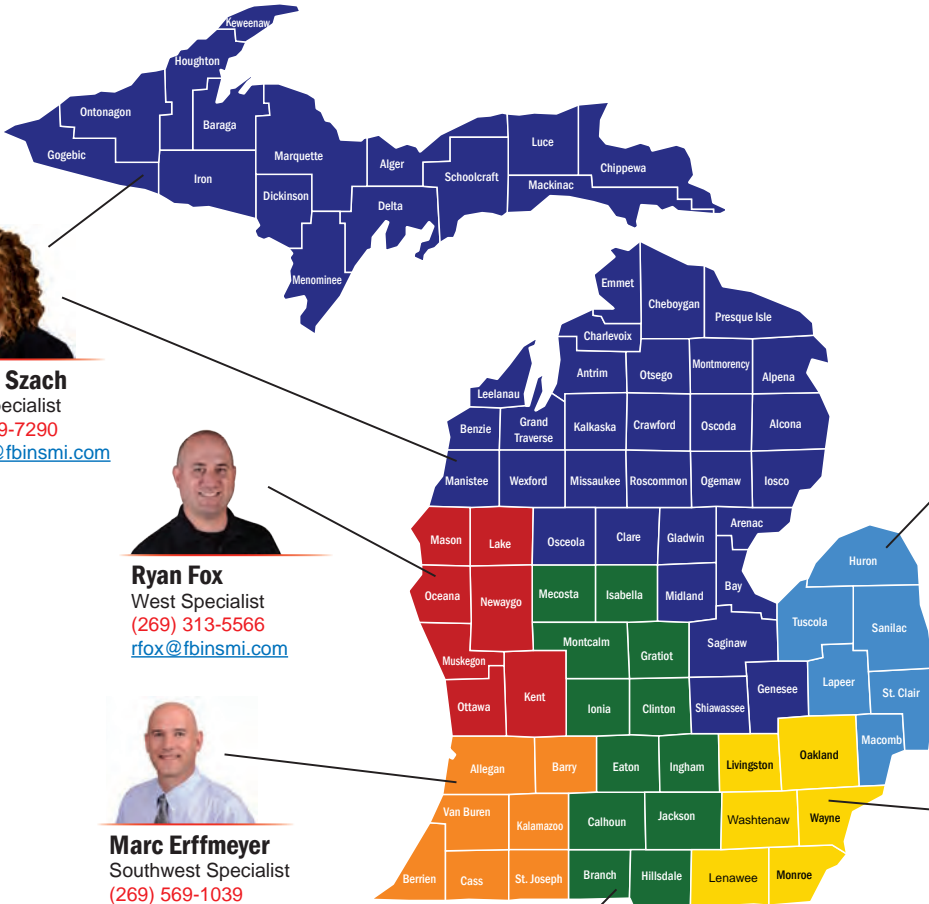
** Offer available through December 31, 2023. Available on new Case IH Farmall tractors. This offer may be combined with other offers, but is not valid on prior purchases. A valid Farm Bureau® Membership Certificate is required, which may be obtained at fbverify.com/case. See your participating Case IH dealer for details and eligibility requirements. Not available in all states. Offer subject to change or cancellation without notice. FARM BUREAU, the letters FB, the FB National Logo, and the State Farm Bureau Logo are service marks of the American Farm Bureau Federation used under license by Case IH.

† A current Farm Bureau membership verification certificate must be presented to the Case IH dealer in advance of product delivery to receive the incentive discount.

©2023 CNH Industrial America LLC. All rights reserved. Case IH and CNH Industrial Capital are trademarks registered in the United States and many other countries, owned by or licensed to CNH Industrial N.V., its subsidiaries or affiliates.



Your Michigan Crop Insurance Team



Brenda Szach
North Specialist
(989) 329-7290
bszach@fbinsmi.com



Ryan Fox
West Specialist
(269) 313-5566
rfox@fbinsmi.com



Marc Erffmeyer
Southwest Specialist
(269) 569-1039
merffme@fbinsmi.com



Heather Thalison
Inside Crop Ins. Sales Specialist
(989) 534-1034
hthalis@fbinsmi.com



Matt Thelen
Central Specialist
(989) 640-0570
mthel1@fbinsmi.com



Marc Reinhardt
Bay-Thumb Specialist
(989) 450-4851
mreinha@fbinsmi.com



Nate Gust
Southeast Specialist
(517) 605-1076
ngust@fbinsmi.com

**Contact your local
Crop Specialist today!**



**Michigan's
Crop Insurance**

FarmBureauInsurance.com/Crop

COME SEE US!

August 15 & 16, 2023
St. Johns, MI

AGRO EXPO

connect. discover. innovate.



Exclusive Discounts, Technology Demos, Giveaways, and More.

Don't forget to checkout the
**SEE & SPRAY
ULTIMATE DEMO**



Hutson

Your source for high-quality
equipment, parts, service & support
[Learn more at Hutsoninc.com](https://www.hutsoninc.com)